

## New Features in version 3.4.0

1. Add PURGE command in MACRO to clear the input and output buffers associated with the COM port.

[Description]  
This function is used to clear the input and output buffers associated with the COM port.

[Usage]  
PURGE(com\_port)// com\_port range : 1 ~ 3

2. Add system tag-LW9576, for count received data from MODBUS TCP/IP Server

330	LW-9576 (32bit) : received data count (bytes) (Ethernet MODBUS server)
-----	--

3. MODBUS Server is able to use [Turn around delay]

Timeout (sec) : 1.0

Turn around delay (ms) : 10

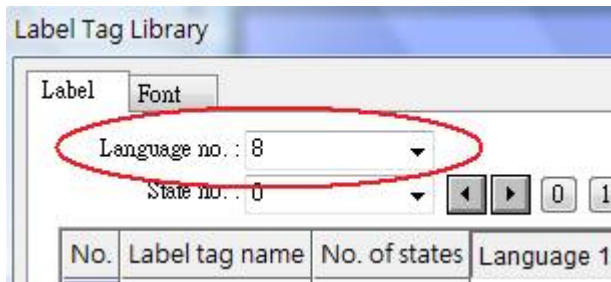
4. [Label Tag Library]

Provides an automatic sorting feature in Label Tag Library.

No.	Label tag name	No. of states	Language 1	Language 2
1	a	1		
2	c	1		

5. Users are able to apply Language more flexible in Label Tag Library.

For example, When Language no. is less than 8, the state no. is able to select more than 32 states. (In EB8000, the maximum of states is 256 for Languages, so if you use 4 Languages, each language is able to use 64 states.  $256 \text{ states} / 4 \text{ language} = 64 \text{ states for each language.}$ )

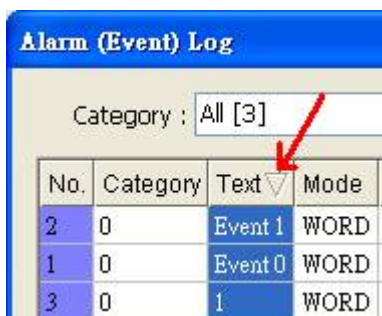
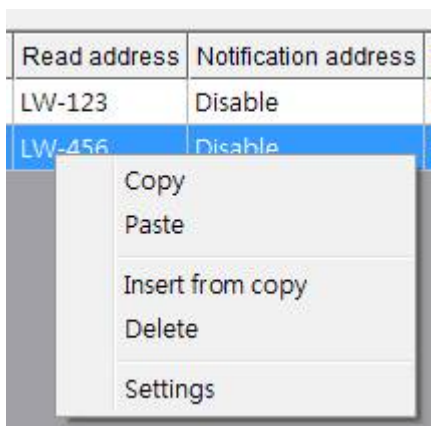


6. The Label selection in the object's property are able to use bitmap font for display Persian and improve the small size font or display the fonts which are not supported in HMI in previous EB8000 version.



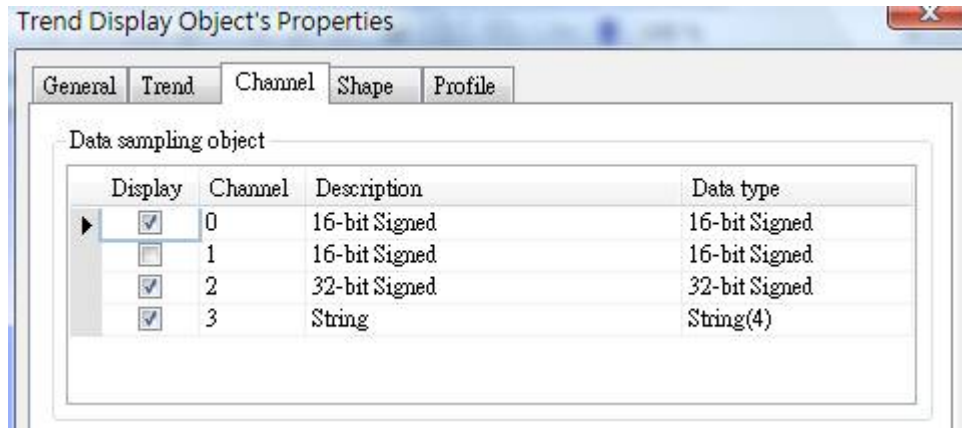
### 7. [Alarm (Event) Log]

Provides dialogue for "Copy", "Paste", "Insert from copy", "Delete" and "Settings" features in Alarm (Event) Log table and sorting function when click "No.", "Category", "Text", "Mode", "Condition", "Read address", "Notification address" and "Buzzer".

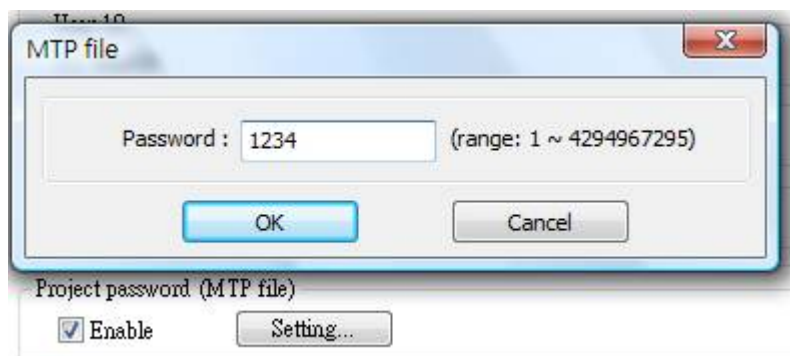


8. The System tag is able to use “Multi-copy” function for consecutive addresses setting.

9. Trend Display object is able for users to select the channels which users would like to observation.

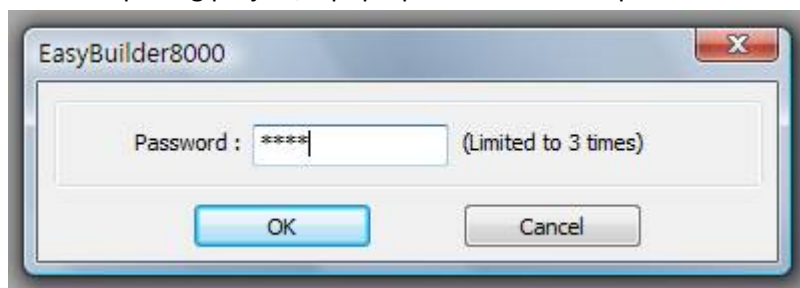


10. Add “Project password (MTP file)” in [System Setting] for users to set password (as 10-1) and next time when opening project; users have to type in password for editing the project(as 10-2).



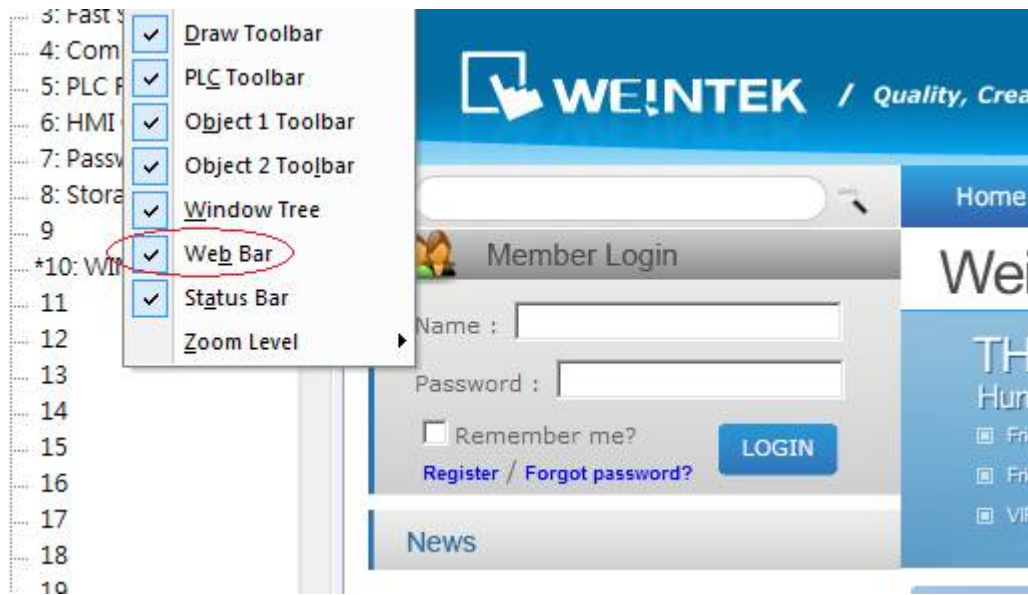
**10-1**

Before opening project, a pop-up window will ask password for accessing the project.

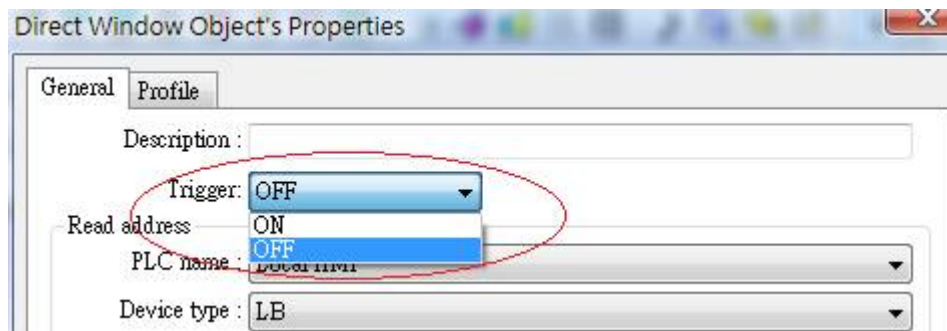


**10-2**

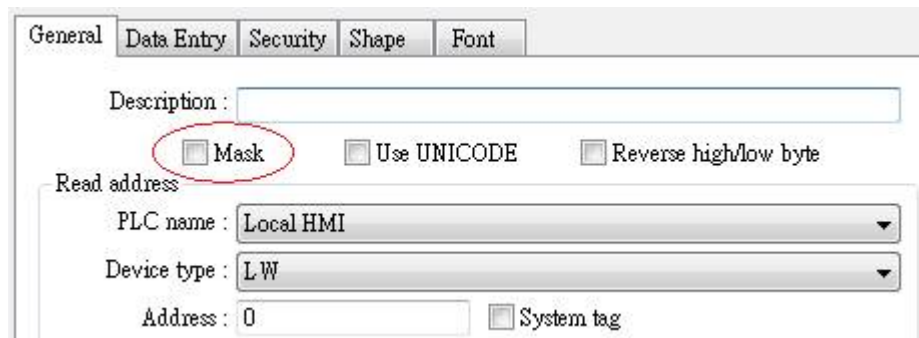
11. A [Web Bar] in [View] menu which is able to browse Weintek website for easy to check Weintek product or information on line.



12. Provide two way for triggering [Indirect Window] object. 1. [Trigger:ON] or 2.[Trigger: OFF]



13. Add [Mask] function for ASCII Input object and ASCII Display object.



14. EB8000 supports different DPI(Dot Per Inch) display size.

15. [LB9190] system tag

The register can be used to reconnect to USB PLC automatically. ON indicates the HMI is trying to reconnect to USB PLC.

#### 16. [LB9191] system tag

The register can be used to indicate the states of communication with USB PLC. ON indicates the communication is normal while OFF indicates the communication is disconnected from USB PLC; at this time set the state to ON, the MT8000 will try to connect to USB PLC again.

#### 17. [LB9192] system tag

The register can be used to disable "PLC NO RESPONSE" message when disconnecting to USB PLC.

### **Corrections-EB8000 in version 3.4.0**

1. When using [multi-state switch] and the state no. is more than 15, after re-enter the properties setting of object two times, the state no. is not able to retain.
2. When AUX is selected in EB500, eob file can not transfer to EB8000 correctly.
3. When using [data sampling] object with string format, history data display object / data format tab is unable to change character no...
4. After decompile xob file included [data transfer time-based] object, [active only when designed window opened] in data transfer time-based object is designated on [window 1].
5. The setting on [system parameter settings / extended memory] is unable to retain.
6. If numeric input object does not select [use popup keypad], after decompiling this xob file, [use popup keypad] is selected automatically.
7. When using [screen saver] and [backlight saver] simultaneously, [screen saver] is unavailable.
8. When HMI gets the wrong PLC response, the system tag to be connected with PLC communication states (such as LB9200) will be set to OFF.
9. Improving the for-loop in the Macro performance.
10. When MACRO executes complex mathematics or logical judgment, the result is incorrect.

11. In the MACRO, when users use DELAY (0), MACRO is unable to execute.
12. In the Option List object, when running off-line simulation, a black on the end of object list will display on the screen but in the designed software can not visible.
13. X and i series are able to use HP Color LaserJet CP1518ni printer.
14. When changing window and did not close [Direct Window], the object which overlay under [Direct Window] will be triggered if users click object in [Direct Window].
15. When HMI as a MODBUS Server and accepting more than 8 bytes of data, LW9570 [received data count (bytes)] can not read the data correctly.
16. Fixed after changing IP address in the run time, the macro which has to read/write PLC address is not able to execute.
17. The Trend display / History mode is able to display all day data on the screen.
18. Fixed when using float format in macro, the data is not able to read/write correctly.
19. Fixed when using address variable in SetData and GetData in Macro, the data is not able to read/write correctly. If using older version of EB8000 the system will get DBn 10044
20. LB9016 system tag  
When all remote HMI disconnected to Master HMI, the LB9016 will be turn OFF; if one of remote HMI disconnected the LB9016 will not turn OFF.
21. LB9068~LB9075 system tag  
LB9068~LB9075 will auto. ON when HMI power on for reconnecting remote HMI.

## **Corrections-EB8000 Driver**

Correct MODBUS Server driver according to MODBUS protocol.

- a. When receiving read command of function code 0x01 and 0x02, points that can be read each time is not able to exceed 2000(0x7d0) points.

- b. When receiving read command of function code 0x03 and 0x04, the data can be read each time should not exceed 125 (0x7d) words
- c. When receiving write command of function code 0x10, the data can be changed each time can not exceed 120(0x7b) words
- d. When receiving write command of function code 0xf, the data can be changed each time can not exceed 1968(0x7b0) points.
- e. The content of sub function of function code)0x8 has to be 0, otherwise server won't receive the request.
- f. If the server receives the request, but detects the content is not match Modbus protocol, server will response an error code 0x01.
- g. When the amount of data read/write beyond a~d as defined in the size, server will response an error code 0x02.
- h. When command is not supported, server wills response an error code 0x10.